

# THE WAYNE HERALD

ONE-HUNDRED FIFTH YEAR

WAYNE, NEBRASKA 68787, MONDAY, SEPTEMBER 27, 1981

THIS ISSUE — ONE SECTION, 16 PAGES

NUMBER ONE-HUNDRED FOUR

## Lessons & Love Rural Hoskins Teacher Takes Time to Care

By Randall Howell

She's got a sparkle in her eyes.  
She's got a smile on her lips  
She's got a love in her heart  
She's got education on her mind  
And, the combination is Sharon Shelton — American woman, rural teacher, farm wife, working mother

AFTER EIGHT years of teaching, Shelton still exudes a first day at school enthusiasm.

And, she spent her first day as one of Wayne County's rural school teachers earlier this month.

She's teaching 11 children in six grades of the Fleer School (District 77) just northwest of the rural Hoskins farm she and her husband, Doug, own.

It's her second year in one of the state's 400 one-room rural schoolhouses, after seven years of teaching in Nebraska's city school systems.

Glimpses of her first year as a rural teacher in Stanton County have been recorded in color photography and black and white prose by "Woman's World," a national weekly magazine for women.

TEXAS FREE-LANCE writer and photographer Diane Gentry working on assignment last May for "Woman's World," spent two days with Shelton, her aide, Phyllis Drake, and "hay kids."

In a two-page section, entitled "The American Woman," Shelton tells her story — a story about country education and caring.

With five color photographs of her with some of her 24 students in and near the one-room, rural Stanton country schoolhouse, Shelton talks about her experiences in an article headlined "City Girl in a Country Schoolhouse."

Born in Ashland (about half way between Omaha and Lincoln), Shelton graduated from high school there in 1968.

SHE EARNED a bachelor's degree in elementary education from Wayne State College in 1972, two years after marrying Doug, who was a business administration student.

Shelton met her husband, also a Wayne State College graduate (1971), while she was pursuing her elementary education major and sociology minor. They both had the same math class.

They now have three children, Cameron, 6, Jayme, 4, and Brock, 2, and a 160-acre cattle, corn and soybean farm north of Hoskins in southwestern Wayne County.

"Doug loves cattle," Shelton said. "We want the kids to grow up on a farm. I'm a city girl, but I wouldn't trade farm life for anything." Their oldest son attends first grade at Winside, about 8 miles due east of the Shelton farm.

AND, NEAR their white, two-story, wood frame house, which sets a quarter mile back from the county's east-west gravel road, is another house.

It's being readied for "grandma and grandpa," Doug's parents and eager babysitters for the young working Nebraska couple.

Sharon spent the summer months with her family after a painful and fearful, good-bye to the rural Stanton country schoolhouse and the 24 kids she taught and had grown to love.

Wayne County had offered her a teaching job at the Fleer School, less than three miles from her home, and after some hand wringing and soul searching, Shelton accepted the new post.

"I DIDN'T know what to do," she said. "If (the decision) was really hard, it was sad. I was practically in tears trying to decide."

"Finally, we got down to the economics of it. . . 35 miles round trip to the Fleer School against 54 miles round trip."

Shelton said she felt she was getting "left out of time" with her own kids.

"I really got attached to the (rural Stanton) kids, but I signed up for District 77," she said.

So, Shelton moved her country schoolhouse teaching career closer to home and family — both very dear to her.

Never very close to her own mother, Sharon has lived without her father since she was 15. Milton Wollen, her trucker father, died of cancer at the age of 42. Sharon was a high school freshman at the time of his death.

Before her father's death, Sharon's brother, Billy, had gotten sick and died when he was 6 years old. Then her grandmother, who was living with the Wollen family, died of cancer.

SHELTON'S YOUNGEST sister, Jackie, a high school sophomore, remains at home with her mother, Vera Wollen, in Ashland, where they moved when her father died.

The family had moved from Ashland to Omaha, then to Ralston. Shelton's oldest sister, Joyce, 34, lives near Ashland in a community called Greenwood. A younger sister, Karen, 29, is a nurse in Lincoln.

After Sharon and Doug, who was born in Mississippi but grew up near Pierce, were married, the couple lived in an off campus Wayne apartment.

AFTER BOTH had graduated they moved to Norfolk. Sharon

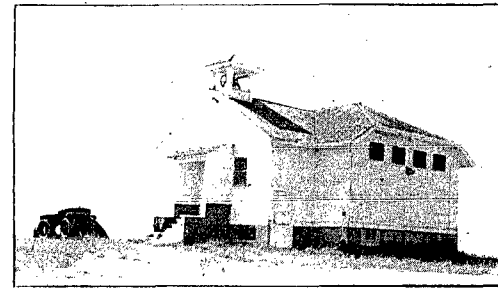
See TEACHER, Page 13



SHARON SHELTON with her son, Brock, 2, during an afternoon outing on their rural Hoskins farm.



SHARON SHELTON and Fleer School (District 77), rural Wayne County.



Photography: Randall Howell

## College Board, Faculty Settle

After several months of negotiations, unionized Wayne State College faculty members have approved an 11 1/2-hour contract offer from the Nebraska State Colleges Board of Trustees.

Approval came earlier this week after a Sunday telephone-call agreement was reached between Dr. J. S. Johar, president of the State Colleges Education Association, and Keith Kemper, president of the Board of Trustees.

The association had given the board a 4 p.m. Sunday (Sept. 13) deadline. According to Johar, who also is president of the Wayne State College Education Association, the state association was prepared to take the trustees to court in search of a salary settlement.

THE STATE association represents faculty members at Wayne State College, Kearney State College and Peru State College — 127 dues paying members on the three campuses.

Chadron State College is not a member of the bargaining unit.

Approval of the contract offer, which involves a board-approved 12 percent system-wide cap on salary increases, was 81-2, according to Johar.

Wayne's dues-paying, voting association members voted 18-2 in favor of the offer. Voting faculty members at Kearney and Peru unanimously approved the offer — 50-0 and 13-0, respectively.

The settlement represents an average salary hike for faculty members of \$2,500 for the current academic year, according to Johar.

AS PART OF the settlement, an unofficial good-faith agreement was reached whereby some \$15,000 in WSC "vacancy savings" funds would be considered, and approved, by the board for faculty salary purposes during an upcoming meeting.

Also in the proposed settlement is about \$5,000 (.32 percent) to be used for promotions, new doctorates and floor adjustments at WSC, according to Johar.

Under the new settlement, WSC faculty members will receive a basic 12.32 percent hike, plus the promised "vacancy savings" funds at a later date.

That would put the average WSC academic salary at \$21,370 for the 1981-82 year, according to Johar, who served on the state association's negotiating committee.

KEARNEY STATE faculty members will receive an 11.4 percent hike under the settlement, which brings the average academic salary on that campus to \$22,230.

Peru State faculty members will be getting a 10.84 percent raise, which translates into an average academic salary of \$20,598.

Chadron State, which has reached its own settlement with the board, is utilizing some \$42,000 in vacancy savings. Faculty salary increases there amount to 13.2 percent. The average academic salary at Chadron for the current year is \$22,226.

The settlement provides Wayne State College instructors with a salary range from \$13,550 to \$19,355, plus \$1,000 for a doctorate.

IT ALSO provides WSC assistant professors with a salary range from \$16,800 to \$20,230, plus \$1,000 for a doctorate.

Under the 1981-82 agreement, associate professors will work in a range from \$19,650 to \$28,065. And, full professorships begin at a salary of \$23,580 with no ceiling.

New doctorates will earn the staff member a \$1,000 salary bonus and a rank

See SETTLE, Page 13

# Wayne Police Crime-Solving Rate Ranks 43% in 1980

Wayne's Police Department solved 43 percent of the city's criminal cases last year — a record that exceeds that of 28 other first-class Nebraska cities.

The crimes-cleared rate is 5 percent ahead of the closest contenders — York and LaVista — and 6 percent ahead of the rate fourth highest — Falls City.

And, all three close contenders have an officer-resident ratio that exceeds Wayne's 1.2 policemen per 1,000 population.

THOSE FIGURES have been gleaned from the State Crime Commission's annual uniform crime report by Police Chief Vern Fairchild.

Fairchild recently produced a 29-city comparison chart that pitted Wayne against 28 larger first-class cities in the state. With a population of 5,094, Wayne

reported 98 crimes during the year, or 19.2 crimes per 1,000 population, according to the report.

And, 43 percent of those crimes were cleared by six sworn officers — the smallest police force in the first-class list.

Falls City's 37 percent rate came on 144 crimes per 1,000 population in a city of 5,186 persons. That's 27.8 crimes per 1,000 population for nine police officers.

Falls City has 1.7 policemen per 1,000 persons.

YORK'S 38 percent cleared rate is based on 319 crimes, or 41.4 crimes per 1,000 persons, in a city of 7,710.

Eleven officers give the city a ratio of 1.4 policemen per 1,000 persons.

And LaVista, with a population of 8,756, reported 309 crimes for the year, or 35.3

crimes per 1,000 persons. With 11 policemen, the city's cleared rate was at 38 percent.

LaVista has a ratio of 1.3 officers per 1,000 persons.

Wayne's 98 crimes for 1980 represented the fewest number recorded in the 29-city comparison. Falls City was closest with 144 crimes in 1980.

No other city in the comparison had only six police officers. Ralston (population 5,110) and Papillion (population 6,377) each have seven police officers.

PAPILLION'S policeman-population ratio was the lowest in the group with 1.1 officers per 1,000 persons.

And, the city's crime-cleared rate was only 10 percent — a low Papillion shared with Sidney and South Sioux City.

Sidney (population 5,996) and South Sioux

City (population 9,093) have 11 and 14 officers, respectively.

The officer-population ratio in Sidney is 1.8 per 1,000 persons. In South Sioux City, the ratio is 1.5 — the average for the 29 cities in the comparison.

Seven cities in the comparison had populations between 5,000 and 6,000 persons. They included Wayne, Falls City, Ralston, Sidney, Holdrege, Chadron and Ogallala.

OGALLALA, a city of 5,624, reported 72.9 crimes per 1,000 persons for a total of 410 crimes during 1980.

With 10 officers, or 1.8 policemen per 1,000 persons, the city's cleared crime rate was 21 percent.

In Chadron, which reported a 17 percent crime cleared rate, 10 officers worked on 340 crimes, or 56.9 crimes per 1,000 persons.

Chadron's population is 5,972 for a policeman-resident ratio of 1.7.

Seward, with a population of 5,698, reported 275 crimes during 1980, or 48.3 crimes per 1,000 persons.

The city's crimes cleared rate was 27 percent with eight officers for a ratio of 1.4.

Holdrege, with a population of 5,585, reported 253 crimes, or 45.3 crimes per 1,000 residents. With seven officers, the city's crimes cleared rate was 13 percent on a 1.3 ratio.

WITH A population range from Wayne's 5,094 to Grand Island's 33,160 residents, the average for the comparison group was 11,721 persons.

In the 29-city comparison group, the average number of crimes was 604 per year,

or 47.3 per 1,000 persons — more than double the rate in Wayne.

Wayne's crimes-cleared rate was more than double the 21 percent average in the comparison group, which had an average of 17 officers on the police force.

THE HIGHEST officer-resident ratio was in Alliance where there were 2.2 policemen for every 1,000 persons.

Grand Island, the largest city in the comparison, also had the highest number of crimes — 2,162, or 45.2 per 1,000 residents. That city's crimes cleared rate was 14 percent with 42 officers representing a 1.3 ratio.

South Sioux City had the highest number of crimes per 1,000 residents — 77.3. With 18 officers, the department there has 1.8 policemen for every 1,000 residents.



## Country boy. . .



. . . by randall howell



farmyard under any circumstances is a head-shaker, as far as I am concerned.

**THIS INCIDENT** was no accident. At least, it seems unlikely to me that anyone would hit the front door of a mailbox dead center by accident. The slug tore through the door and blew open the back of the mailbox as it rattled into the trees and foliage between the roadway and the farmyard. I've been a hunter all my life. I love the sport. I enjoy guns. But I can't get used to the idea of killing mailboxes, farm buildings, livestock or farmers. I've been shot at myself. And, I don't like it. I've always wondered how the people who do that would like to be standing on the business-end of their own gun. Sometimes, it seems to me, that's going to be the only way to get the message across.

**LET ME TELL** you a story about two young hunters and the business-end of a gun. They are cousins. And, they hunted together as young men along the riverbanks and brushpiles near their farm homes in northeastern South Dakota. Nearly the same age, they shot their first rabbits within days of each other. They took the National Rifle Association safe hunting course together. They hunted with their fathers, who were careful hunters. They, too, became careful hunters. Almost inseparable on a hunting trip, the two youngsters learned how to handle guns — how to care for them and how to use them.

**ONE DAY**, as the two were out hunting gophers and cottontail rabbits, they came upon an old abandoned farmstead. Walking through the brush, they spotted a number of gophers. Spooking the varmints with a noisy approach through the grass, the cousins were left without much of anything to shoot. However, both had spied a gopher run into the end of a long, rusty water pipe. The cousins quickly decided that one would lift the end of the pipe, while the other waited, gun cocked, for the gopher to slide out the end. It was no sooner said than done. One end of the pipe went up. The gopher slid out the other end into the sights of a .27 calibre rifle.

**BLAM.** The hollow point bullet slammed into the end of the pipe and shattered. And, as the uninjured gopher sought the safety of a hole, the pipe ran red with blood. A scream of pain and terror cut through the echo of the explosion. The pipe-holding cousin fell to the ground with bullet fragments in his head. He picked himself up, unable to determine the extent of the injuries. In shock, with blood binding him as it rushed down his face, the wounded farm boy stumbled and screamed to a farm house over a quarter mile away.

On his heels, and also in shock, was his hunting partner, the trigger man.

**HOURS LATER**, the wounded farm boy walked out of the hospital emergency room with a souvenir bullet fragment in his hand and stitches in his forehead. Smaller fragments were left, embedded against the young man's skull. And, for years afterward, the young man who pulled the trigger relived the nightmare, time and time again. Today, the young man who survived the gunshot wounds is a successful farmer in northeastern South Dakota. His cousin is editor of The Wayne Herald. Catch you next week.

Howdy. I've been on the road, again. I took the time to zip down to Grand Island the other day for a look at Husker Harvest Days '81. Man, what a show.

Acres and acres and acres of farm equipment, demonstrations, seed testing plots, dealers, and farmers for as far as the eye could see.

**THEY'VE GOT** equipment today doing farm work that I didn't even know had to be done. And, these new hybrid seeds... why, they do everything but make it rain.

I did, however, the day before I got there. Tuesday was opening day and the clouds clapped for moisture. Wednesday, which is the day I arrived, was windy and cold. But that didn't stop the crowd.

I didn't have any trouble finding the show, though I've never been on that part of the prairie before. The Grand Island area is so flat, I could see the show tents for 20 miles.

With State Patrol officers directing traffic, a long line of cars streamed into the show grounds west of Grand Island.

I **KNEW** I was in trouble when I discovered the car parkers were on horseback. Caught in the middle of a line that reached halfway to Grand Island, I decided to stick with it. So, after parking a good half mile from the test plots (which are a good half mile from the tents and displays), I trudged across the country into the middle of show grounds.

The closer I got, the bigger the place got. And, once inside the main show area, I was lured from tent to tent by everything from popcorn give-aways to live, country western music.

And, the come on look was everywhere. Kids were carrying bags. Farmers were carrying bags. Farm wives were carrying bags. Grandpas and grandmas were carrying bags.

**IN THOSE** bags was the loot, everything from yard sticks to seed samples. Caps emblazoned with every trade name imaginable bobbed through the crowd that jammed the streets from one end of the show to the other.

Jackets and vests bearing the name of dealers, companies and manufacturers were popular, probably because of the cold weather.

The crowd scurried from one colorful tent to another as the bands tuned their fiddles, and belted out music ranging from CW to love ballads.

You could sign up for thousands of different kinds of merchandise for the price of listening to a dealer explain the wonders of his farm gadgets, chemicals or seed.

**WITH A GOOD** corn crop in the offing, the farmers were in a good mood — almost jovial. And, the dealers were in a better one.

There wasn't a frown in the place. As dealers demonstrated the latest in tractor pulled and self-propelled equipment on surrounding fields, farmers hooked it through plot after plot of corn, sorghum and alfalfa.

It was a colorful and informative event with giant branded balloons circling lazily overhead and brand name flags of every color whipping in the brisk breeze. It was an education in modern agri business. The progress is astounding. Gone are the days when you'd get a stubby pencil and a pocket notebook from the local feed-and-seed dealer.

**THE GIVE-AWAYS** alone at Husker Harvest Days have to be worth more than the entire inventory at the grain elevator we patronized when I was a kid.

## High Interest Rates May Ruin Nebraska Farmers

During the recent Congressional recess, I traveled throughout the First District. At each stopping point, farmers, small business owners, builders and other citizens told me about their deep frustration and concern over high interest rates. Many of these people said frankly that they may lose their livelihoods if we don't see relief soon from persistent high interest rates. One farmer asked me outright, "Could you take over my farm and run it successfully if you had to borrow money at 20 percent?" I genuinely sympathize with that farmer. I will not pretend that I could continue to run his farm, or any small business operation, successfully, against the odds of persistent 20 percent interest rates. **WHEN** I returned to Washington last week, I immediately wrote Paul Volcker, chairman of the Federal Reserve System. I told chairman Volcker very directly what



**congressman doug bereuter** saw and heard during my travel around the First District. I made it clear that these vital segments of our economy that are so dependent on credit for their normal business needs cannot survive under current economic conditions. I sincerely fear that, unless some carefully crafted short-term relief from high interest rates is devised soon, many farmers,

small business owners, and home builders may not be in business to profit from the economic prosperity that the Reagan economic recovery program will bring. We should remember that, prior to the administration's budget and tax reduction programs, the Federal Reserve Board has been alone in the battle against the monster of inflation. Now, Congress has overwhelmingly approved a bold plan of deep spending cuts and tax reduction incentives. Monetary policy need no longer carry the inflation battle alone. And I pointed this out in my letter. I told chairman Volcker that it is time for the Federal Reserve to re-examine its monetary control policies. We have to recognize the disastrous short-term effects that unrelenting high interest rates are having on many sectors of our economy. And we have to provide some relief to the farmers, small business owners and builders who are the most direct victims of these oppressive interest rates.

**SAFETY CHECKS** — An important element of President Reagan's economic program is regulatory relief — elimination of many of the complex, frequently onerous federal regulations that too often serve little useful purpose and drive up costs for businesses and for government. As a part of this effort, the Labor Department is considering two interesting changes. Under one proposal, Occupational Safety and Health Administration (OSHA) inspections would be geared to a business's safety records. If records show that a company has few workplace injuries, that company would not have frequent inspections. The new plan would allow OSHA to concentrate its efforts on any high-hazard workplaces that have higher injury rates. Also, the agency plans to reduce the number of federal inspectors in states that have federally approved OSHA plans. At present, 24 states would be affected by this proposal.

## Business Backs the Fine Arts in America

**Richard L. Leshar**, U.S. Chamber of Commerce received one of those "Dear Friend" letters recently, the salutation on which is a sure sign that I have become the target of some fund-raising campaign. In this case, the letter was from Rep. Fred Richmond (D-N.Y.), chairman of the Congressional Arts Caucus Education Fund. I'd like to share the highlights with you: "If current proposals to slash Federal arts funding in half are successful... we would have only \$88 million to fund this country's 1,800 symphony orchestras, 35,000 community theaters, and thousands of museums, botanical gardens, zoos, arts centers and opera and dance companies. The proposed cuts in the Federal arts budget could cause major economic and cultural disasters all over America."

**"JOIN US** and play an important role in saving the arts in America... We need your support to demonstrate that Americans are willing to protect their cultural heritage." The situation sounds desperate, doesn't it? To hear Rep. Richmond tell it, our nation would crumble into cultural and economic ruins should the budget reduction slated for the National Endowment for the Arts take effect. Well, the Congressman can breathe a little easier now. Congress has rejected the Administration's bid to slash the budget for the arts in half, though it did cut it from \$159 million this year to \$119 million next year. But this budget battle is far from over. Rep. Sidney Yates (D-Ill.), chairman of the Appropriations subcommittee which has jurisdiction over the arts endowment, has announced that he will fight to increase its funding during the next stage of the Congressional budget process — appropriate

Also unresolved is the larger question of what role the federal government should play in subsidizing the arts. Rep. Richmond and his allies, who include many star performers, obviously believe that the arts in America would be decimated without a federal arts bureaucracy making artistic judgments for us and doling out our tax dollars accordingly. **IN FACT**, the arts are flourishing in America. Rep. Richmond's own figures presented at the beginning of his letter are a good indication of the! They are succeeding with over 90 percent of their financial support coming from the business community, private foundations and the audiences themselves — support which has been growing year by year. For example, six million people went to the opera in America in 1976. In 1980, atten-

dance totaled 13 million. In 1965, 10 million people attended the nation's symphonies; by 1979 that figure had reached 28 million. It is clear that the performing arts in this country are making it in the marketplace, which is where they belong. As such, I can't think of a more appropriate place for the budget axe to fall. Rep. Richmond concludes his letter by calling upon us to "protect our cultural heritage." Americans have been doing just that in recent elections by rejecting the idea that a centralized government in Washington should define and fulfill our ever need — and by reaffirming our beliefs in private enterprise, individual initiative and personal freedom. It is precisely that heritage which continues to lead men and women from every walk of life — including the arts — to beat paths from all over the world to America.

## viewpoint

### Pop-Gun Pipsqueaks

Some of the fall hunting seasons are underway. Others will soon begin. Hundreds of Nebraskans in the northeastern part of the state enjoy hunting as an autumn opportunity to get outdoors and pit their skill against wild game. The freshness of the fall air and the challenge of the kill excite some. Others are moved by the comradery, the tradition, the sportsmanship. It's all there... and more, for those who still live for the hunt. However, each hunting season, some clown or group of clowns manages to make it increasingly difficult for the law-abiding hunters to get into the field. Landowners are increasingly reluctant to allow hunters into their fields. The "no hunting" signs increase year after year. And, strange as it may seem, some hunters — fortunately a very small minority — still have trouble distinguishing between cattle and deer, mailboxes and rabbits, windows and game birds, traffic signs and varmints. Any country drive soon reveals the handiwork of trigger-happy hooligans. It's difficult to find a stop sign that hasn't been riddled by gunfire — usually the spray of shotgun pellets. There are other targets, too. Rural mailboxes seem to be among the favorites. Power-line insulators and machinery headlights often come under attack from gun-wielding seven-day wonders. Of course, the target list is endless. But, the privilege of hunting is not. Sooner or later, these pop-gun pipsqueaks are going to ruin any chance the serious hunter has to pursue game. It would be interesting to see what would happen someday if farmers were in the habit of taking fall joy-rides through town shooting up traffic signs, mailboxes, traffic lights, store windows, automobile headlights and an occasional dog. You can bet that things would change in a hurry around here. So, if you are a serious hunter, for whatever reason, leave area landowners with that impression. Ask permission before walking on, driving in or entering land. It's a good idea whether the ground is posted or not. Keep an eye out for livestock, machinery, farm buildings and farmers. Go over the basics of safety with your son or daughter. Shoot only what you are licensed for and don't leave a trail of rubbish for the landowner to follow. Close gates and don't take shortcuts across crops. And don't be afraid to keep your hunting buddies in line. Most serious, law-abiding hunters know that kind of behavior brings a successful day in the field and an invitation to return next year.

*Landowner*

## another viewpoint

### Firearm Fantasy

A National Rifle Association analysis of the latest crime statistics published by the FBI reveals that those major metropolitan areas with strict gun laws lead the nation in their rates of violent crime. Among cities whose populations exceed 500,000, Boston was listed as America's most violent town last year. The 1980 statistics are contained in the FBI's Uniform Crime Reports released on Sept. 10. Boston is followed by New York City, Baltimore, Washington, D.C., and Cleveland, all of which have extremely rigid gun laws. Massachusetts, in 1975, adopted the Bartley Fox Act, establishing a mandatory jail term for the unlicensed carrying of a firearm. In 1974, the year before Bartley-Fox took effect, Boston ranked fifth in overall violent crime. It now ranks first. New York, which passed Bartley Fox type legislation in 1980, has become America's second most violent city since the law passed, jumping from fourth place in 1979. Baltimore, with stringent gun licensing and registration requirements, saw a 19 percent increase in its rate of robbery last year over 1980. And Washington D.C., where the private ownership of handguns was banned in 1977, moved from eighth place in overall violent crime before the handgun ban to fourth place in 1980. Since the District of Columbia enacted its handgun ban its murder rate has risen 17 percent, according to the FBI's data. In nearby Virginia, where there are relatively few restrictions on gun ownership other than those imposed by federal law, the murder rate dropped 9 percent. The UCR statistics show that, overall, the U.S. murder rate has fluctuated in recent years. It fell from 9.8 per 100,000 in 1974 to 8.8 in 1976 and 1977. Then it rose to 9.7 in 1979 and rose again to 10.2 in 1980. Firearm involvement in murder, however, has declined during those years, down from 67.9 percent in 1974 to 62.4 percent for 1980. Additionally, handgun involvement in murder has fallen from 1974, when handguns were involved in 54 percent of U.S. murders, to 50 percent in 1980. This decrease has occurred despite the influx of more than 13 million new handguns into U.S. circulation during the same time period.

## who's who, what's what

1. WHO has achieved life membership in the Insurance Fire Mark Society of the Professional Insurance Agents Association (PIA)?
2. WHO are the Wayne High Varsity Cheerleaders for the 1981-82 sports season?
3. WHAT WSC freshman is listed in the Who's Who in American High School Basketball 1980-81?
4. WHAT churches in Wayne and Wakefield are 100 years old?

**THE WAYNE HERALD**  
Serving Northeast Nebraska's Great Farming Area

PRIZE WINNING NEWSPAPER 1981

Handall Howell Editor  
Jim Marsh Business Manager

114 Main Street Wayne, Nebraska 68787 Phone 878-8500

Established in 1875, a newspaper published semi-weekly, Monday and Thursday (except holidays), by Wayne Herald Publishing Company, Inc., J. Alan Crorer, President, entered in the post office at Wayne, Nebraska 68787. 2nd class postage paid at Wayne, Nebraska 68787.

**NATIONAL NEWSPAPER**

100th Anniversary  
NNA SUSTAINING MEMBER — 1975

No. 104 Monday, Sept. 21, 1981

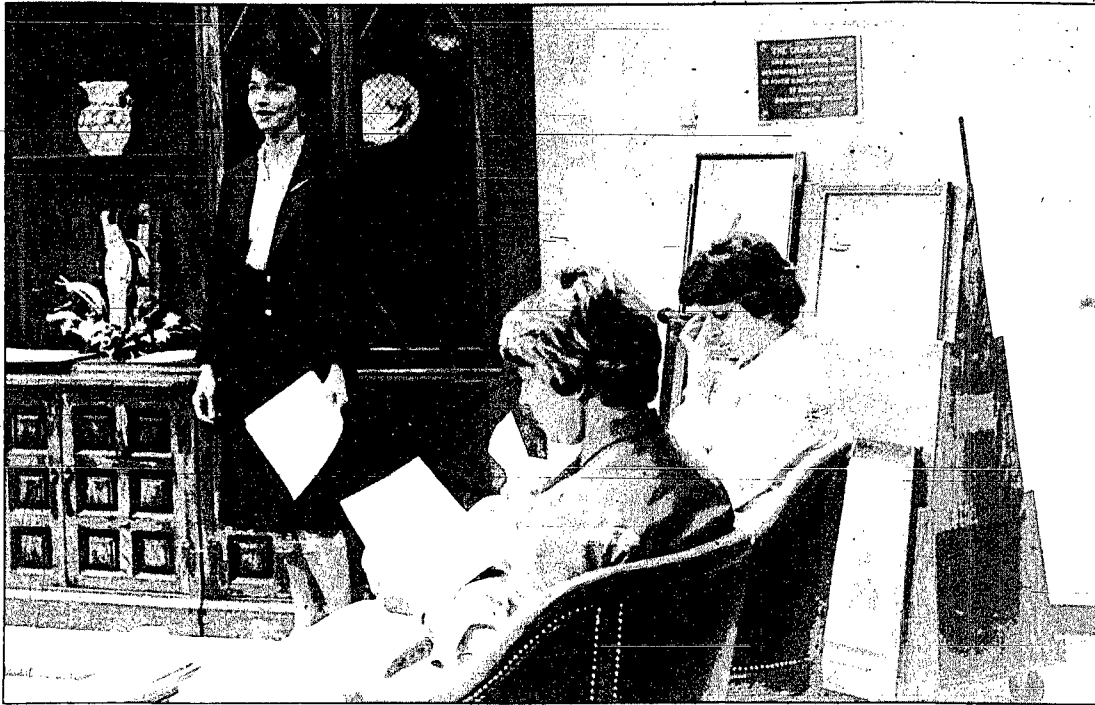
Official Messenger of the City of Wayne, the County of Wayne and the State of Nebraska

PUBLICATION NUMBER — USPS 470-840

**SUBSCRIPTION RATES**

In Wayne, Pierce, Cedar, Dixon, Thurston, Cuming, Stanton and Madison Counties: \$12.75 per year, \$9.98 for six months, \$8.16 for three months. Outside counties mentioned: \$13.00 per year, \$10.00 for six months, \$10.30 for three months. Single copies 20 cents.





**SANDY ELLIOTT DEDICATES A NEW ART CART** at Providence Medical Center to Dorothy Ley in the hospital's Chapin room. The art cart, pictured in background, began making its way through the cor-

ridors of Providence last Friday. Twice each week, volunteers will take the cart with a variety of prints into the patients' rooms where they can select a print to hang on their wall.

Photography: Lavon Beckman

## In Memory of Dorothy Ley

# Art Cart Begins to Make Way Through Providence Corridors

A "living and loving memorial" to Dorothy Ley was presented Tuesday morning at Providence Medical Center.

About 25 persons gathered in the hospital's Chapin room to dedicate a new art cart to Mrs. Ley, who was instrumental in bringing the project to Wayne's hospital.

Before her death last January, Mrs. Ley inspired the art cart project as another way for the community hospital to provide "excellent individual care" to patients.

**THE PROJECT** is modeled after a service provided at Methodist Hospital in Rochester, Minn., where Mrs. Ley was a patient.

Realizing the possibility of providing a similar service at Providence, Mrs. Ley presented her idea last January to Providence Medical Center Board of Directors, who unanimously approved the idea.

"The concept is to provide psychological support through art by bringing beauty and joy in to the lives of those who are ill in the hospital," said Mrs. Ley before her death.

A plaque mounted on the side of the art cart reads "In Loving Memory of Dorothy Ley, 1981."

**THE ART** cart, manned by volunteers, began making its way through the corridors of Providence on Friday.

Patients are given the opportunity to select prints twice week-

ly. Those managing the cart visit with patients and inquire if they would like to trade the picture on their hospital room wall for a new print.

The patient can select from the various prints on the cart — such as landscapes, farm scenes, scenes from the past, flower still lifes, children, humorous pictures by artists such as Norman Rockwell, as well as pictures by the old masters.

**THE PRINTS** were selected by a committee comprised of Ted Blendenman, Pearl Hanson, Sister Cecilia Poll, Chuck Carhart and Jessie Barr.

Carolyn Vokoc matted and sprayed the prints, and framing was done by Bill Wilson. Other persons instrumental in realizing the project were Oscar Thun, who designed and constructed the cart, Ginny Otte, financial chairman; Gary Van Meter, who donated the plaque on the cart honoring Mrs. Ley; Ann O'Donnell, publicity chairman; and hospital board member Becky Keidel.

**SANDY ELLIOTT**, who spoke at Tuesday morning's dedication, said the art cart has received excellent support from the community.

To date, residents of the community have donated enough money to purchase 29 prints. Two other prints were donated by local citizens.

Mrs. Elliott pointed out that ad-

ditional funds are needed to provide enough prints for all of the hospital rooms.

Contributions of \$25 provide for an attractive art print and its framing, and entitles a person to become a patron of the Art Cart. Contributions may be sent to Ginny Otte, Art Cart Treasurer, 515 W. Second St., Wayne, Neb. Persons who have prints they would like to donate are asked to contact Jessie Barr.

**SPEAKING** AT the dedication Tuesday, Mrs. Elliott told the group of Mrs. Ley's thoughts on the project.

"Dorothy felt the project was much more than exchanging a picture on the wall to give a new view.

"It was one of the ways the hospital said, 'You are an important human being, and your feelings are important to us. We want to add pleasure to your day.'"

Mrs. Ley also felt the project provided the patient an opportunity to make a choice for

himself, where few options exist in the routine of the day.

**MRS. ELLIOTT** especially thanked members of the Ley family attending Tuesday's meeting, along with the volunteers and those who gave donations or prints.

David Ley spoke on behalf of the Ley family and expressed thanks to all those involved with making Dorothy's idea a reality.

"Dorothy's feelings about the project were not all for the art," said David, "but more for the patients."

"She was an especially unique person. She was able to make her ideas reality."

**ALSO SPEAKING** in memory of Dorothy Ley was Sister Cecelilia of Providence Medical Center.

"You give but little when you give possessions," said Sister. "It is when you give of yourself that you give a lot. The giving and

receiving of pleasure is a need and an ecstasy."

Marci Thomas, hospital administrator, said the art cart project inspired by Mrs. Ley helped "make the best better."

**THE ART CART** began making its rounds on Friday.

Volunteers, who will man the cart each Tuesday and Friday, include Mary Bower, Joann Kubik, Nancy Fleck, Marsha Foote, Kaky Ley, Anna Mae Wessel, Kathy Struve, Joyce Reeg, Kay Swerczek and Joani Burt.

Substitutes are Jessie Barr, Linda Carr, Sandy Elliott, Karen Jones, Becky Keidel, Claudia Koeber, Donna Liska, Jane March, Mave Middendorf, Joyce Niemann, Charlene Rasmussen, Lois Shulthies and Kathy Wisner.

Other persons interested in working as a volunteer are asked to contact Mrs. Elliott.

## Renee Hurlbut-Vern George Say Vows in Ashland Church

Renee Kay Hurlbut became the bride of Vern Harold George in 10:30 a.m. rites Sept. 5 at the First Christian Church of Ashland.

The Rev. Phillip Hayes of Ashland officiated at the double ring ceremony. Decorations included yellow and white bows, yellow roses, and yellow and white daisies.

The bride is the daughter of Clarence and Darlene Hurlbut of Ashland, and the bridegroom is the son of Harold and Marie George of Dixon.

**HONOR** attendants were Barbara James Ketter of Eau Claire, Wis. and James Lamb of Lincoln. Candles were lit by Alice George and Carolyn George, both of Dixon, and guests were ushered to their seats by Lyle George of Wayne, Richard Hurlbut of Omaha, Doug Glunz of Lincoln and Roger Stage of Waterloo, Iowa.

Kent Warneke and Chris Wineman sang "Annie's Song" and "Wedding Song." They were accompanied by Teri Weber at the flute and Retha Smith, organist. All are of Lincoln.

**GIVEN** IN marriage by her father, the bride appeared in a white tulle and organza floor-length gown designed with a jewel neckline and long, narrow sheer sleeves adorned with Venice lace Venice appliques enhanced the schiffli inset at the neckline and basque bodice. Her skirt, which descended from an empire waistline, was edged in matching lace and draped to a full chapel train.

A bridal lace overlay picture hat encrested with handclipped appliques, seed pearls and bridal illusion completed her ensemble. She carried yellow roses and yellow and white daisies.

**THE BRIDE'S** honor attendant wore a yellow hat and a yellow floral print frock in floor length designed with long, sheer sleeves.

The men in the wedding party were attired in brown tuxedos. Mrs. Hurlbut chose a peach floor length dress, and Mrs.



**Mr. and Mrs. Vern George**

George selected a green floor-length fashion.

Waitress was Betsy Ginger of Madison, Wis.

**A RECEPTION** for 165 guests was held at the church following the ceremony. Guests were registered by Allison Myer of Lincoln, and gifts were arranged by Karen Hurlbut of Omaha and Allen George of Dixon.

Janice Dill and Theresa Reim, both of Ashland, cut and served the cake. Kelly Nickerson of Lincoln poured, and Beth Cordell of Lincoln served punch.

**THE BRIDE**, a 1978 graduate of Ashland-Greenwood High School, plans to graduate in May 1982 from the University of Nebraska-Lincoln.

The bridegroom, a 1978 graduate of Laurel High School, plans to graduate from the University of Nebraska-Lincoln in December 1982.

The newlyweds are at home at 1400 N. 37th, Lincoln, Neb., 68503.

## new arrivals

**BARGHOLZ** — Duane and Debbie Bargholz, Wayne, a daughter, Darci Lee, 6 lbs., 7 1/2 oz., Sept. 15, Providence Medical Center. Darci joins a sister, Dawn Marie. Grandparents are Mr. and Mrs. Don Lienemann, Randolph, and Mr. and Mrs. Elmer Bargholz, Wakefield. Great grandparents are Mr. and Mrs. Jack Lienemann and Mr. and Mrs. Henry Leo, Randolph, Mrs. Frank Bargholz, Wayne, and

Mrs. Mary Laase, Wakefield.

**SCHMEICHEL** — Mr. and Mrs. James Schmeichel, Fremont, a son, Cory James, 7 lbs., 3 oz., Sept. 17. Grandparents are Mr. and Mrs. Cliff Baker, Wakefield, and Mr. and Mrs. Gene Schmeichel, O'Neill.

Great grandparents are Mrs. Sophie Barner, Wayne, and Glenn Schmeichel, Johnston.

**WALSH** — Mr. and Mrs. Jerry Walsh, Hubbard, a son, Justin Michael, 8 lbs., 7 oz., Sept. 14, St. Luke's Medical Center, Sioux City. Mrs. Walsh is the former Linda Hall of Carroll. Grandparents are Mr. and Mrs. Russell Hall, Carroll, and Mr. and Mrs. William Walsh, Hubbard. Great-grandmother is Mrs. Anna Hansen, Carroll. Justin joins a sister, Michelle, 4, and a brother, Joey, 3.

**Think FALL**

If you haven't been to Joanie's lately, you've missed seeing all her new fall giftware and florals — and more is coming in all the time!

• Vases • Bowls • Ginger Jars • Pitchers and Basins • New Silk Flowers • Seafoam Green is our new fall color!

Joanie is busy designing fall wreaths. See them on display or custom order yours!

*Joanie Designs*  
Joanie Burt  
Silk Wedding Specials  
Complete Service & Rentals

518 Lincoln St.  
Wayne  
Phone 375-4892

**HIGHEST INTEREST RATES IN TOWN**

**MONEY MARKET** Current Rate **15.157%**

26 Week Certificates • \$10,000 Minimum

State regulations prohibit compounding of Money Market Certificates

**89 DAY VARIABLE RATE CERTIFICATE 14.50%**

This is a new certificate which allows you to invest as little as \$1,000 for only 89 days and receive a very high interest rate.

**First Savings Co.**

703 Main Street Wayne, NE Phone 375-2590

Hours: Weekdays 9-5 — Saturday 9-12

A First National Holding Co. Subsidiary Chartered and Regulated by the State, Dept. of Banking

**Quasar Microwave Oven**

**COOKING SCHOOL**

**Everyone is Invited**

This Thursday, Sept. 24  
School is 7:00 p.m. - 9:00 p.m.  
At T & C Electronics  
214 Main, Wayne

Featuring:

**QUASAR MICROWAVE OVEN WITH INSTA-MATIC™ COOKING AND HUMIDITY SENSOR CONTROL**

**See You Thursday:**  
**T & C Electronics**  
SALES and SERVICE  
near Audio Video Systems Center  
214 Main Wayne Phone 375-4484





Wayne Herald Photography

## Golf League Champs

TEAM TWO defeated Team 22 in the finals of the Wayne Country Club League playoffs. Winners from left: Dick Wacker, Clark Coco, Budd Bornhoff, Frank Prather. Second place went to the team of Jim Marsh,

Ron Carnes, Dick Ditman and Harold Surber. The team of Bob Reeg, Rick Weaver, Cornell Runestad and Dean Craun defeated Bob Bornhoff, Tom McClain, John Miller and Clark Wenke.

## Allen Tops Emerson for League Lead

Although it's early in the volleyball season, Allen has to be considered in the driver's seat of the Lewis Division of the Lewis and Clark Conference.

**IN RESERVE ACTION.** Allen romped over Emerson 15-2, 15-4. Troth said his JV team, which struggled last week, "looked real

good. They played better and our setting and hitting was improved.

Pam Kavanaugh led the team in spiking and Michelle Pettit was the leading server. Troth used most of his players in the match and said that everyone played well.

Despite gaining a key victory, Allen coach Gary Troth said that neither team played up to potential.

Neither team got into its usual rhythm. It wasn't the type of match I expected, Troth said. The match was the key to our conference race. Before the match I felt that the winner should probably be the conference favorite. Experience probably won the match.

**THE EAGLES** were led by Des Williams and Nancy Olsufka with five points each in the first game. Olsufka scored seven in the second game. Williams had 15 good sets in 15 attempts and Janet Peterson had four ace spikes and one block.

Troth said serving was "very valuable" in both games and added that it wasn't much of a hitting game. Allen had only about 70 spikes in the match.

"Our passing game wasn't bad but our spiking was weak. It was a serve dominated match and we made fewer mistakes," said Troth.

The match pitted the two Lewis Division favorites. Both teams were undefeated entering the contest. The Eagles, who have averaged about 93 percent serve efficiency this season, hit only

**The Magic of the Stars**

Only on HBO Lucille Ball, Jack Lemmon and Milton Berle presto-change as superstar comics and celebrities make your viewing with HBO's exclusive specials, movie hits and

**HBO People Don't Miss Out.**

**HBO**  
Home Box Office

In Wayne, Nebraska  
**HALF-PRICE INSTALLATION SPECIAL**  
ENDS FRIDAY, SEPTEMBER 25!  
**HBO INSTALLED FOR ONLY \$10.00 IF YOU CALL BEFORE 5:00 P.M., SEPTEMBER 25 — CALL 375-1120**  
Last Chance to Save  
**WAYNE CABLEVISION**

120 W. 3rd 375-1120

## Offensive Outburst

# Promising Wayne Frosh Hammer Pierce 50-8

Led by an explosive offense, the Wayne freshman football team pounded Pierce 50-8 Thursday.

The Blue Devils amassed 257 yards rushing and 64 yards passing. Four backs racked up 221 yards on the ground in only 13 carries.

Quarterback Steve Overin carried the ball four times for 68 yards. Brad Moore carried three times for 59 yards. Todd Dorsey carried three times for 52 yards and Kevin Maly carried three times for 42 yards. Pete Warne had two pass receptions for 27 yards.

**WAYNE SCORED** three touchdowns in the first quarter while holding Pierce scoreless. Overin rambled 35 yards for the first TD. The point after attempt failed.

The second touchdown was scored on a two yard run by Maly. Overin ran for the two point conversion. The third and final TD of the first quarter came on a 40-yard run by Moore. Overin passed to Warne for the two point conversion.

The second quarter was less explosive but Wayne continued to put points on the board. Maly galloped 38 yards for a TD. The PAT failed but Wayne led 26-0.

Chris Wieseler added the only touchdown of the third period when he scored on a three-yard run. He also carried on the two-point conversion.

**IN THE FINAL** quarter, Todd Dorsey broke free for a 36-yard TD. The PAT failed. The last touchdown was scored on a six-yard pass from Moore to Preston Olson. Darrin Barner's two-point conversion run brought Wayne's final tally to 50 points.

Pierce scored its only touchdown on a 65-yard run in the fourth quarter. "Everyone played real well. Our blocking was real good," Wayne coach Duane Blomkamp said. "The offensive line did a good job. Our tackles and center blocked well and our guards did pretty well."

Defensively, Wayne was led by Overin with 14 tackles. Maly with 10 and Rick Urwiler with 9.

## sports slate

- Monday, Sept. 21  
Football: Wayne JV at Pierce
- Tuesday, Sept. 22  
Volleyball: Wayne at Norfolk  
Volleyball: Hartington at Wakefield  
Volleyball: Winside at Wausa
- Wednesday, Sept. 23  
Volleyball-St. Mary's, Morningside at WSC
- Thursday, Sept. 24  
Volleyball: Wayne at Wisner-Pilger  
Volleyball: Winnebago at Allen  
Volleyball: Wakefield at West Point  
Volleyball: Coleridge at Laurel  
Volleyball: Winside at Stanton  
Football: Schuyler at Wayne freshmen
- Friday, Sept. 25  
Football: Wausa at Winside  
Football: Wisner at Wayne (homecoming)  
Football: Allen at Ponca  
Football: Hartington at Wakefield  
Football: Emerson at Laurel (homecoming)  
Volleyball: Wayne State at Kearney State  
Cross Country: Wayne at Crofton Inv.
- Saturday, Sept. 26  
Football: WSC at Yankton (migration)
- Sunday, Sept. 27  
Lions Club Football Skills Competition
- Monday, Sept. 28  
Volleyball: Newcastle Invitational  
Football: Hartington CC at Wayne JV

# BOWLING

Phone 375-3390  
1221 Lincoln

## Melodee Lanes

**Home Of Frigidaire & Maytag Appliances**

**WE SERVICE WHAT WE SELL**

**KUGLER ELECTRIC**

Russ Tiedtke, Owner

---

**SIEVERS HATCHERY**

**HYLINE CHICKS & GOOCH FEED**

Phone 375-1420  
'Good Eggs To Know'

---

**JEFF'S CAFE**

FOR YOUR Dining Enjoyment Morning, Noon or Night

---

Call **JONES UPHOLSTERY** 585-4797

We recover furniture - auto seats - Material available

Carroll, NE.

---

**THE WAYNE HERALD**

FOR ALL YOUR PRINTING NEEDS

**Community**

WON	LOST
Wayne Distributing	8 1/2 3 1/2
Tom's Body Shop	7 4
Wayne Grain & Feed	7 4
Bill's Dry Cleaning	7 5
Western Auto	7 5
Charlie's Refrigeration	6 6
Winside Grain & Feed	6 6
Nutrena Feeds	6 6
Hurbers Milk Transfer	5 7
Otto Construction	5 7
Ron's Guns	4 8
First Nat. Bank	1 10
High Scores: Swede Hailey 227, 444, Wayne Distributing 861, 2, 473	

**Go Go Ladies**

WON	LOST
Road Runners	11 1
Hits & Misses	9 3
Pine Falls	8 4
Rolling Pins	8 4
Pin Splinters	8 4
Bowling Belles	6 6
Newcomers	5 7
Bucky Strikers	4 8
Pin Pros	4 8
Whirls-Ways	3 9
Alley Cats	0 12
High Scores: Esther Hansen 180, 505, Pin Pals 669, 1,914	

---

**City League**

WON	LOST
Wayne's Body Shop	12 0
Ellington Motors	9 3
State Nat Bank	9 3
Red Carr Implement	7 5
Wayne Greenhouse	7 5
Wayne VFW	6 6
Woods Plumbing	6 6
Black Knight	5 7
Bob's Derby	5 7
Mary Sam Service	4 8
Heritage Homes	1 11
Carhart Lumber	1 11
High Scores: Ric Barner 233, 669; Wayne's Body Shop 985, 2,796	

---

**Saturday Nite Couples**

WON	LOST
Koil Witt Jaeger	7 1
Janke Jacobsen	6 2
Jorgensen-Watson	6 2
Soden Krueger	5 3
Craft DeWald-Matthews	5 3
Guthrie Kemp	4 4
Hoffman Jaeger	4 4
Topp Luff Johnson	3 5
Schluns Jones	3 5
Suehi Nissen	2 6
Shulthis-Baker	2 6
Jensen Schwegnke	2 6
High Scores: Steve Johnson 309, Mary Soden 203, Linda Janke 520, Tom Nissen 587, Suehi-Nissen 709, Koil Witt Jaeger 1,954	

**Monday Night Ladies**

WON	LOST
Thies-Bridgman	7 1
Kiddie World	7 1
Wayne Herald	6 2
Wayne Greenhouse	5 3
Gerald's	5 3
Greenview Farms	4 4
Ellis Barber	4 4
TP Lounge	3 5
El Toro	3 5
Carhart's	2 6
Wayne Vet's Club	2 6
Country Nursery	0 8
High Scores: Sue Wood 201, Geri Marks 201, Sue Wood 367, Carhart's 896, Wayne Campus Shop 2,462	

---

**Friday Night Couples**

WON	LOST
Bull Rose	3 1
Dall Luff	3 1
Hammer Lubberstedt	3 1
Beckman-Welbie-Mellon	3 1
Carmen Schroeder	3 1
Tietz Luff	2 2
Wecker-Fredrickson	2 2
Deck Janke	1 3
Wood Hansen	1 3
Holtorf-Sturm-Carollo	1 3
Baier-Hailey	1 3
Miliken-Roberts	1 3
High Scores: Norma Tietz 215, Nina Hammer 530, Dan Rose 234, 577; Bull-Rose 748, Mettler 1,892	

**High Scores: Sue Wood 201, Geri Marks 201, Sue Wood 367, Carhart's 896, Wayne Campus Shop 2,462**

**STATE NATIONAL BANK & TRUST CO.**

122 Main  
Phone 375-1130

---

**For After Bowling League**

**SNACKS & REFRESHMENTS**

**THE EL TORO**

Lounge & Package

---

---

**WAYNE GRAIN & FEED**

200 Logan  
Phone 375-1322

---

**Going out to eat?**

**RON'S BAR & Garage**

is the Place  
Serving the finest in steaks & sea food.

Carroll, NE.

# FREE CHECKING!

... with a qualifying savings account.

There are many other reasons for having a Midwest Federal Interest Earning Checking account. You earn 5 1/4% interest on your balance, compounded continuously. Your money is insured-safe by the FSLIC. Initial supply of checks is free. You can pay bills by phone or check. And you can take advantage of Direct Deposit of Government checks.

...It's great to be a Midwesterner!

You can get FREE Interest Earning Checking if you have a:

- Certificate of \$5,000 or more
- Regular savings account of \$2,500 or more
- An IRA or Keogh retirement account
- A qualifying Home Loan

If you qualify, come in today and sign up. Write as many checks as you need. There are no service charges.

**Midwest Federal SAVINGS AND LOAN**  
4th and Main - Wayne

EAST HWY. 35

## WAYNE DISTRIBUTING

HOLLAND BEER

PHONE 375-3081





**COLORADO at BYU**  
**Godfather's Pizza.**  
 Beer on Top  
 Equal Opportunity Employer, M/F  
 Phone: 375-4005  
 106 South Main (Old Railroad Depot)  
 Wayne, NE

**9 3/4% INTEREST FINANCING**  
 Take advantage of the terms that increase your profit and protect your borrowing power. The **Siaux Finance Plan** is simple and easy, no red tape, erection, wiring and foundation work is included.  
**Wayne St. at Yankton**  
**Carhart LUMBER CO.**  
 WRITE - CALL - SEE US

**ALLEN at PONCA**  
**THE ULTIMATE COMPUTER VIDEO GAME SYSTEM**  
 By MAGNAVOX  
 Suggested List \$199.95  
**\$149.95**  
**T & C Electronics**  
 Tom and Cindy Schmitz  
 Sales & Service Phone 375-4684  
 214 Main

**EMERSON at LAUREL**  
**FREE Ear Piercing**  
 Purchase a pair of ear piercing earrings and have your ears pierced - FREE - by our trained professionals. Earrings priced from \$10.00  
**THE DIAMOND CENTER**  
 211 Main Ph. 375-1884

**Wayne's ONLY Completely AUTOMATIC CAR WASH!**  
**TEXAS TECH at BAYLOR**  
**ELDON'S**  
**Standard Service & Car Wash**  
 310 South Main - 375-2844  
 Where a Clean Car Becomes a Happy Car

# WAYNE HERALD'S Football Contest

**WAYNE'S FAMILY FUN CENTER**  
**HARTINGTON at WAKEFIELD**  
**MELODEE LANES**  
 1221 Lincoln Wayne 375-3298

**HAVING A PARTY?**  
 Let Vel's Bakery prepare your next roasted hog or beef. Just give us a call and your delicious meat will be ready when you are!  
**Ranzas Every Saturday**  
**VEL'S BAKERY**  
 You Know It's Fresh... We Bake It from Scratch.  
 309 Main Wayne 375-2088

**1st Prize \$25 GIFT CERTIFICATE**  
**2nd Prize \$5 GIFT CERTIFICATE**

**The Rusty Nail Fashion Headquarters for Guys 'n' Gals**  
 218 Main St. Ph. 375-3795  
**Kennington JANTZEN**

**ARKANSAS at MISSISSIPPI**  
**FOR SALE**  
**Century 21 STATE - NATIONAL**  
 Serving All of Northeast Nebraska  
 Professionals Farm Sales & Management  
 Wayne - Phone 375-2990  
 Felix Dorcay - Brokers - John Dorcay  
 Dakota City - Phone 987-3007  
 Mark Dorcay - Salesman - Golen Wisner

**STAR OF THE WEEK**

Defense has been an important part of area teams' performances early in the season. Thus, it is appropriate the year's first two "Stars of the Week" were selected for fine defensive performances.

Nominations are accepted from area football coaches and selections made for the previous week. Final selection is based on individual performance and contribution to the team. Due to the Labor Day weekend, two stars are named today for efforts during the first two weeks of the season.

For Sept. 4, Barry Bowers of Winside was named star of the week. Despite losing to Wakefield, Bowers had 18 total tackles in a fine individual effort.

In another losing effort, Wayne's Kevin Koenig was named star of the week for Sept. 11. He had 8 unassisted tackles and 11 assists in a fine defensive effort.

The Sept. 18 star of the week has been selected and will be announced next Monday. He was chosen for offense.

**Other Nominations**  
 Sept. 11 - Wakefield: Jeff Coble, Allen Dennis Smith, Laurel Tim Bloom, Winside: Barry Bowers  
 Sept. 4 - Wakefield: Mark Starzl, Allen Bruce Malcom, Wayne: Tim Heier, Laurel: no nomination

**PENN ST. at NEBRASKA**  
**Give that football fan a Blue Ribbon**  
**WAYNE DISTRIBUTING INC.**  
 Wayne, NE

**Chicken Special**  
 3 Pieces French Fries Roll **\$2.50**  
**Monday and Tuesday Only**  
**MARYLAND at NO. CAROLINA ST.**  
**EL TORO**  
 Package Store and Lounge  
 Ph. 375-2636 Wayne East Hwy. 35

**TACO del SOL**  
**TRY OUR FANTASTIC MEXICAN FOOD!**  
**UTAH at NORTHWESTERN**  
 112 East Second St. Mineshaft Mall Ph. 375-4347  
 Open 7 Days a Week! 11:00 to 11:00  
 Wayne, NE

**HAPPY HOUR**  
 Monday-Saturday 5:00-6:30  
 CAN BEER - 60¢  
 BAR DRINKS - 60¢  
 DRAWS - 25¢  
 Carryout? Check Our Party Discounts  
**BLUE BOTTLES**  
 Daily till 5:00 ..... 65¢  
**4th Jug** 102 Main 375-9958

**UCLA at IOWA**  
**FISH FRY**  
 Friday, September 25, at 7:00 to ??  
**\$1.00 PLATE**  
 Stop in Thursday at 8 p.m. for the \$1,000 Give-Away  
**TP Lounge** 111 East 3rd Wayne 375-9990

**RON'S BAR**  
 Carroll, Nebraska  
**T-Bones are the Special!**  
 KANSAS at KENTUCKY  
**NEW! Mini Salad Bar**  
 on Weekends except Fish Fry Fridays!

**LR78 x 15 W Radial Steel**  
**\$61.90 F.E.T. \$3.06**  
**WASHINGTON at OREGON**  
**Fredrickson Oil Co.**  
 1 1/2 miles north of Wayne 375-3535

**IT PAYS TO COMPARE COVERAGE AND RATES!**  
 Auto-Home-Health-Life-Motorcycles  
 MISSISSIPPI ST. at FLORIDA  
**Northeast Nebraska Insurance Agency**  
 Ph. 375-2696

**---DEADLINE IS THURSDAY AT 5 P.M.---**

Bill's G.W. \_\_\_\_\_ T&C Electronics \_\_\_\_\_  
 Northeast Insurance \_\_\_\_\_ The Diamond Center \_\_\_\_\_  
 Ron's Bar \_\_\_\_\_ Melodee Lanes \_\_\_\_\_  
 The 4th Jug \_\_\_\_\_ The Rusty Nail \_\_\_\_\_  
 El Toro Lounge \_\_\_\_\_ Wayne Distributing Inc. \_\_\_\_\_  
 Century 21 \_\_\_\_\_ Taco del Sol \_\_\_\_\_  
 Vel's Bakery \_\_\_\_\_ TP Lounge \_\_\_\_\_  
 Eldon's Standard \_\_\_\_\_ Fredrickson Oil Co. \_\_\_\_\_  
 Godfather's Pizza \_\_\_\_\_ First Savings Co. \_\_\_\_\_  
 Carhart Lumber Co. \_\_\_\_\_ Griess Rexall \_\_\_\_\_

Game of the Week - (This is the Tie Breaker - Pick scores for this game only)

**TIE-BREAKER**

WISNER-PILGER \_\_\_\_\_ at WAYNE HIGH \_\_\_\_\_

NAME \_\_\_\_\_ ADDRESS \_\_\_\_\_

CITY \_\_\_\_\_ STATE \_\_\_\_\_ PHONE \_\_\_\_\_

**WE PAY THE HIGHEST INTEREST RATES IN THE AREA!**  
**PURDUE at NOTRE DAME**  
**First Savings Co.**  
 703 Main Street Wayne, NE Phone 375-9990

**Fresh Lamb at Bill's G.W. Starting Thursday!**  
**BILL'S G.W.**  
 Member of AFFILIATED Foods  
 Owned & operated independently by Lueders, Inc.  
 Cooperative Inc.  
 TENNESSEE at AUBURN

**COUPON**  
**Developing & Printing COLOR PRINT FILM**

12 Exposure Roll	\$2.99
20 Exposure Roll	\$3.79
24 Exposure Roll	\$4.49
36 Exposure Roll	\$4.99
Movie & Slide (20 Exp.)	\$1.49
Slide (36 Exp.)	\$2.69

On any 110, 126, or 35 mm color print roll film. (C-41 process only - Includes all popular films)

**GRIESS REXALL**  
 Coupon Valid Thru Oct. 8, 1991





### A Curious Cat

A BUTTERFLY FLUTTERING just outside of reach tempts this little kitchen as he stretches a paw through the wire fence to grasp the fleeting moment. It wasn't long before the young feline settled back for his afternoon nap in the warm September sunshine.

Photography: LeVon Beckman

# winside news

**mrs. andrew mann 286-4461**

### LADIES AID

Thophilus Ladies Aid met Wednesday. The meeting was called to order by Mrs. Harold Ritze, president.

Mrs. Duane Thompson was program leader. The group sang "Fairest Lord Jesus." Mrs. Thompson had the opening prayer. Psalm 90 was read responsively followed by singing "Love Divine." Mrs. Thompson read a short article "Tell Him So" by Floy F. Gross and a poem "To My Sunday School Teacher" by Inoz Baker. The business meeting followed the program.

The birthday song was sung for Mrs. Melvin Coulter. A birthday card was signed and sent to Mrs. Sophie Fischer, who resides in a Norfolk nursing home and will be 88 years old.

Mrs. Harold Ritze was hostess. Next meeting will be Oct. 22 with Mrs. Duane Thompson as hostess. Mrs. Frances Axen will be program leader.

### LEGION AUXILIARY

The American Legion Auxiliary of Winside met Sept. 14 with three officers and six

members present.

Mrs. Werner Mann was in charge of the meeting. Mrs. Alvin Carlson read the secretary's report.

The members voted to purchase a new flag for the Legion Hall.

A donation was made to the Gold Star fund.

A discussion was held concerning Girls and Boys State program.

Mrs. Carlson, Gold Star chairman, had charge of a Gold Star Memorial Program. Those taking part in the program were Mrs. Allie Selders, Mrs. Werner Mann, Mrs. Don Weible and Mrs. Leonard Anderson.

Mrs. Frank Weible served lunch. Oct. 12 hostess will be Mrs. Don Weible.

### GOLDEN FELLOWSHIP

Miss Gladys and Willis Reichert entertained the Peace Golden Fellowship group of Norfolk at a picnic supper Wednesday at their home. Twenty one were present. School

lunch boxes and sack lunches were brought in. A business meeting was held later.

### TOWN AND COUNTRY

The Town and Country Club met Wednesday at the home of Mrs. Don Volwiler.

At cards, Mrs. Lester Grubbs received high prize; Mrs. Glenn Frevert, second high; and Mrs. Jay Morse, low.

Mrs. Morse's birthday was observed. The next meeting will be Oct. 13 at the home of Mrs. Arlette Zofka. Mrs. Alvin Nieman's birthday will be observed.

### CONTRACT BRIDGE

The Contract Bridge Club met Sept. 9 at the home of Mrs. Gladys Gaabter. Three guests were present, Mrs. Don Wacker, Mrs. Yleen Cowan.

Next meeting will be Sept. 23 with Mrs. Minnie Graef.

### SENIOR CITIZENS

The Winside Senior Citizens met Tuesday at the Stop Inn with 13 present.

Cards were played for entertainment. A cheer card was sent to Stuart Stutman. Next meeting will be Sept. 22 at 2 p.m. at the Stop Inn.

### SOCIAL CALENDAR

Tuesday, Sept. 22: Senior Citizens, Stop Inn, 2 p.m.; Tuesday Bridge Club, Charles Jackson's.

Wednesday, Sept. 23: Trinity Sunday school teachers meeting; Contract Bridge Club.

Thursday, Sept. 24: Coterie Club, Mrs. Lloyd Behmer.

### SCHOOL CALENDAR

Monday, Sept. 21: Football reserves, Coleridge at Winside, 7 p.m.

Tuesday, Sept. 22: Volleyball, junior high, Laurel, 3:30 p.m.; Volleyball (BAC) Winside at Wausa, 6:30.

Thursday, Sept. 24: Football and volleyball (junior high), Winside at Stanton, 4 p.m.; volleyball (CBA) Winside at Stanton, 6:30.

Friday, Sept. 25: Football, Wausa at Winside, 7:30 p.m.

Monday, Sept. 28: Junior high

volleyball, 3:30 p.m.; Wakefield at Winside; football reserves; Winside at Hartington, 7.

STEVE Morse, son of Mr. and Mrs. Ralph (Jay) Morse entered the Metropolitan Technical Community College at Omaha. He will study hotel and restaurant management. Steve was a 1981 graduate of Winside High School.

Mr. and Mrs. Arf Gray of Darby, Penn., were Tuesday supper guests in the Ralph Morse home. Mr. and Mrs. Clarence Koehn of Norfolk were also guests.

Mr. and Mrs. Gene Reed of Lakewood, Colo. are visiting in the Don Wacker home. Mrs. Elsie Reed accompanied them here. She had been visiting in the Jay Reed home at Colorado Springs and the Gene Reed home.

Mrs. Ivan Diedrichsen is spending from Thursday to Monday in the home of her daughter and family, the Roger Tacey's, at Osmond to help care for their new baby.

Mr. and Mrs. Dennis Coleman and daughter of Denver, Colo. were Sept. 8 supper guests in the Clarke Kai home. They had visited in the Kevin Kai home in the afternoon.

Sept. 13 dinner guests in the Clarke Kai home were Mr. and Mrs. Michael Quigley and family and Mr. and Mrs. Jeffrey Steinhoff and family of Council Bluffs, Iowa. Mr. and Mrs. Larry Pace and family of Emerson, Iowa. Mr. and Mrs. Terry Kai, Mr. and Mrs. Kevin Kai and family. Mr. and Mrs. Brian Kai and Rochelle and Mr. and Mrs.

Shawn Kai of Hoskins. Mr. and Mrs. Clarence Royle of Minneapolis, Minn. came the evening of Sept. 12 to the Erwin Boffter home and to visit other relatives in the area for the week. Mr. and Mrs. Bill Hansen were Sept. 13 dinner guests in the Jack Hansen home in Omaha.

Mrs. Gertrude Utecht, Mrs. Lillian Sanders and Alvin Ohlquist were Sept. 13 dinner guests of Olga Eggli of Genoa. Mrs. Sanders remained to spend several days.

# leslie news

**mrs. louie hansen 287-2346**

### LADIES AID

Mrs. Ronnie Krusemark was hostess to St. Paul's Ladies Aid Sept. 10, with 12 members attending. Mrs. Lillian Sanders and Mrs. Marge Mackey were guests. Pastor Dennis Morner had devotions.

Mrs. Howard Greve, president, presided at the business meeting. The minutes of the Wayne Zone LWML board meeting were read. The district convention of the LWML is planned for June 8, 1982 to be held at the Marina Inn in South Sioux City. The theme of the convention will be "Watered With the Word."

The LWML fall rally of the Wayne zone is Oct. 20 at Grace Lutheran Church in Wayne. LWML Sunday will be observed Oct. 4 at St. Paul's. Mrs. Lillian Sanders was welcomed as a new member of the Ladies Aid.

Mrs. Marge Mackey of Laurel was guest speaker. She reported on the LWML International Convention held in Milwaukee, Wis. in June and gave a slide presentation of the convention. The theme was "Come to the Living

Water." The next meeting is Oct. 8 with Mrs. Howard Greve as hostess.

### MEN'S CLUB

St. Paul's Men's Club met the evening of Sept. 10 Eugene Heigren and Dean Meyer served lunch.

MR. AND MRS. Albert L. Nelson visited Walt Vosteen Friday afternoon at St. Vincent's Hospital in Sioux City.

Mr. and Mrs. Arvid Samuelson were weekend guests of Mr. and Mrs. Kieth Fields in Tipton, Iowa.

Tiffany Nelson celebrated her 10th birthday Sept. 12 with a skating party at the Wakefield Roller Ring. Vicki Thomsen, Kathy Svoboda, Bobby Greve and Kadi Nelson were her luncheon guests are skating in the home of Mrs. Emil Tarnow.

Mr. and Mrs. Paul Henschke were in West Bend, Iowa, Sept. 8 where they visited the Grotto of the Redemption Sept. 12, they toured the Fort Randall Dam at Pickstown, S.D. and Sept. 13 they visited the Corn Palace at Mitchell, S.D.

Mrs. Margaret Thomas of Nor-

folk and Mr. and Mrs. Dennis Coleman and daughter of Denver, Colo. were Sept. 8 supper guests in the Clarke Kai home. They had visited in the Kevin Kai home in the afternoon.

Sept. 13 dinner guests in the Clarke Kai home were Mr. and Mrs. Michael Quigley and family and Mr. and Mrs. Jeffrey Steinhoff and family of Council Bluffs, Iowa. Mr. and Mrs. Larry Pace and family of Emerson, Iowa. Mr. and Mrs. Terry Kai, Mr. and Mrs. Kevin Kai and family. Mr. and Mrs. Brian Kai and Rochelle and Mr. and Mrs.

Shawn Kai of Hoskins.

Mr. and Mrs. Clarence Royle of Minneapolis, Minn. came the evening of Sept. 12 to the Erwin Boffter home and to visit other relatives in the area for the week. Mr. and Mrs. Bill Hansen were Sept. 13 dinner guests in the Jack Hansen home in Omaha.

Mrs. Gertrude Utecht, Mrs. Lillian Sanders and Alvin Ohlquist were Sept. 13 dinner guests of Olga Eggli of Genoa. Mrs. Sanders remained to spend several days.

### senior citizens congregate meal menu

Monday, Sept. 21: New England dinner with corned beef, raspberry/bing cherry mold, corn bread, bar cookie

Tuesday, Sept. 22: Salisbury steak with mushroom sauce, baked potato with sour cream or margarine, green beans, sliced tomatoes, applesauce with oatmeal cookie

Wednesday, Sept. 23: Baked chicken with long grain white and wild rice, Brussels sprouts, frosted apricot salad, dinner roll, sherbet

Thursday, Sept. 24: Roast pork with brown gravy, bread dressing, fresh broccoli/cauliflower salad, Harvard beets, whole wheat bread, Royal Anne cherries

Friday, Sept. 25: Tuna croquets with cheese sauce, oven French baked potato, coleslaw, buttered peas and carrots, whole wheat bread, fresh melon bowl

### MR. FARMER: SEE SHERRY BROS.

FOR

• Anhydrous

• Soil Sampling

• Complete Fertilizer Program

• Dry & Liquid Fertilizer

• Chemicals

**SHERRY BROS.** Farm & Home Center 116 W. 1st. Wayne 375-2082



In Wayne, Nebraska  
**HALF-PRICE INSTALLATION SPECIAL**  
ENDS FRIDAY, SEPTEMBER 25!  
HBO INSTALLED FOR ONLY \$10.00 IF YOU CALL BEFORE 5:00 P.M., SEPTEMBER 25 — CALL 375-1120  
Last Chance to Save  
**WAYNE CABLEVISION**  
120 W. 3rd 375-1120

Donnkenny Jax Slax Firelander R & M Kaufmann Ultra Z Flutterbye Jo Jaba Graft Laura Mae Maverick Russ

Shop today for your Fall and Winter Wardrobe at Country Girl.

We feel we have the best selection even to offer you with all these famous brands and more.

We carry VISA and Master Charge for your convenience.

**COUNTRY GIRL DRESS SHOP WILL BE CLOSED FOR PAINTING AND REDECORATING SEPTEMBER 22, 23 and 24**

**COUNTRY GIRL DRESS SHOP**  
North of Allen at the Junction of Hwys. 9 & 20  
OPEN: Monday 9:00-9:00 - Tuesday-Saturday 9:00-5:00

### Back by popular demand—Corningware

Select from Corningware, America's favorite cookware available in the popular Spice of Life and the new French White. You can freeze, cook, and serve in one beautiful container. For chilly fall nights, you'll appreciate a soft woven or thermal blanket in several decorator colors. See chart below for qualifying deposits:

	\$300	\$1000	\$2500	\$5000	\$10,000
6 1/2" Sp. of Life Skillet	ANY	ANY	ANY	ANY	ANY
1-qt. Sp. of Life Saucepan w/Plastic Cover	ONE	ONE	ONE	ONE	TWO
16" Quiche/Pie Plate French White	ITEM	ITEM	ITEM	ITEM	ITEMS
Thermal Blanket	FREE	FREE	FREE	FREE	FREE
Woven Blanket	\$3.00	\$2.00	\$1.00		
Ekco Stainless Steel Mixing Bowls	\$3.00	\$2.00	\$1.00		ANY
2-qt. Sp. of Life Saucepan w/Glass Cover	\$6.00	\$5.00	\$4.00	\$3.00	ONE
4-pc. Sp. of Life 1-qt. & 1 1/2-qt. w/lids	\$6.00	\$5.00	\$4.00	\$3.00	ITEM
6-pc. Sp. of Life 1 1/2-qt. & 2 1-pt. sauce w/lids	\$6.00	\$5.00	\$4.00	\$3.00	FREE

Premium items will not be given on checking accounts or repurchase agreements.

Come into one of our offices today!

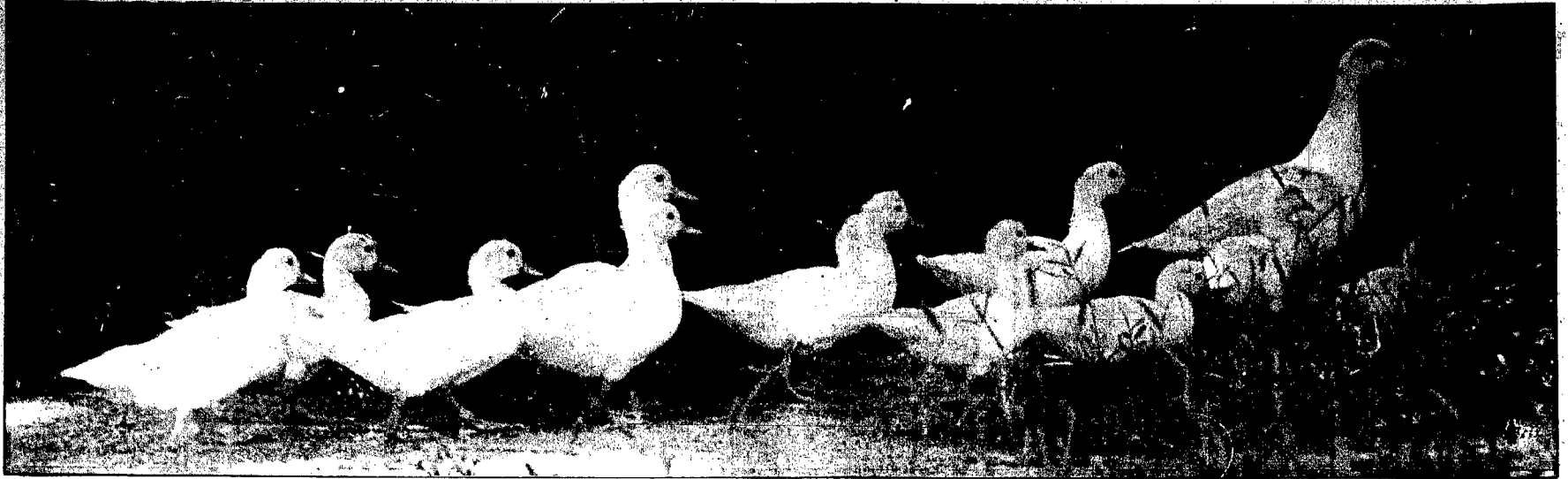
**CF COLUMBUS FEDERAL**  
"Your Family Financial Center"

ESLC

Downtown—  
Monday-Friday 9:00-4:30  
Saturday 9:00-12:00

220 West 7th Street  
Wayne  
Phone: 375-1114

FREMONT SEWARD COLUMBUS WAYNE YORK



Photography: Randy Hascall

## That's Just Ducky

MOTHER DUCK and her many ducklings form a straight line as they waddle across the country road and into the tall grass. They headed onto the Levi Thompson farmstead north of Wayne. The quackers were in no hurry to cross the road and took their sweet time heading into the farmplot to look for some grain.

### hoskins news

Mrs. Hilda Thomas 565-4569

#### GOLDEN FELLOWSHIP

The Golden Fellowship of the Peace United Church of Christ met Wednesday evening at the home of Willis and Gladys Reichert for a 6 p.m. sack lunch. Pastor David opened the meeting with prayer and Andrew Andersen, president, conducted a short business meeting. The evening was spent discussing the recent church centennial celebration. For the next meeting on Oct. 2 they are planning a potluck dinner at the church.

A decorated anniversary cake, brought by Mr. and Mrs. Arthur Behmer, in honor of their 55th wedding anniversary was cut and served by Mrs. Behmer.

The club meets again on Sept. 30 when Mrs. Carl Hinzman will be in charge of arrangements.

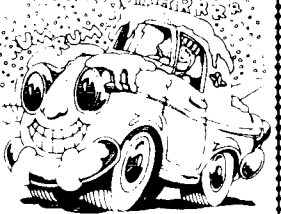
#### BICYCLE PROBLEMS?

See Western Auto, your authorized service center for Huffy and Murray bicycles. We repair all brands of bicycles. Western Auto, 375 1342.

#### SENIORS CARD CLUB

Mrs. E.C. Fenske was co-chairman when the Hoskins Seniors Card Club met Wednesday evening. Card prizes went to Erwin Ulrich and Mrs. Carl Hinzman. High and Carl Hinzman and Mrs. Arthur Behmer, second high.

**Jack Frost**  
Permanent type anti-freeze



Per case      Per gal.      Bulk per gal.  
**\$2440      \$435      \$380**

(In your container)

**Coryell Derby**      211 Logan Wayne  
375-2121

**EARN 25% NOW — GET A TAX BREAK CD OCTOBER 1**

With the Tax-Break Certificate, you earn 25% between now and October 1. On October 1 your funds will be transferred to a one-year Tax-Break CD or to a statement savings or checking account.

**THE TAX-BREAK CD RATE OF 12.61% IS GUARANTEED FOR ONE FULL YEAR.**

12.61% is a good rate, but with \$2,000 for a joint return (\$1,000 for individuals) tax-free, your effective rate is even higher. A married couple can invest \$15,860 without paying a penny of tax. Single persons can invest \$7,930 without being taxed.

Here's how your effective rate of return can be increased:

For persons filing INDIVIDUAL return: Based on Tax-Break CD Rate of 12.61 percent			For persons filing JOINT return: Based on Tax-Break CD Rate of 12.61 percent		
If your taxable income is:	Tax Bracket	Effective Rate Of Return	If your taxable income is:	Tax Bracket	Effective Rate Of Return
\$15,000-18,200	30 %	18.01 %	\$24,000-29,900	32 %	18.54 %
\$18,200-23,500	34 %	19.11 %	\$29,900-35,200	37 %	20.02 %
\$23,500-28,800	38 %	20.67 %	\$35,200-45,800	43 %	22.12 %
\$28,800-34,100	42 %	22.52 %	\$45,800-60,000	49 %	24.73 %
\$34,100-41,500	48 %	24.73 %	\$60,000-85,600	54 %	27.41 %
\$41,500-55,300	55 %	28.02 %			

Figures are approximate and based on 1980 tax tables, using an interest rate of 12.61 percent equal to 70 percent of the average yield on one-year U.S. Treasury bills as of September 3.

Compare this to any other investment you can make.

**Your Tax-Break Certificate is insured safe by FSLIC to \$100,000.**

The 25 percent is not a savings account and is not insured by FSLIC. It is a repurchase agreement backed by U.S. Government Securities.

Substantial penalty for early withdrawal on a Tax-Break CD. Tax exemption is lost if account is closed before one year.



...it's great to be a Midwesterner!



**Midwest Federal SAVINGS AND LOAN**  
10th and Central  
Nebraska City

# GOODYEAR TIEMPO SALE

Now Is The Time For Savings On All-Season Radial Tires!

**\$39.95**

Size P185/80R13 blackwall Plus \$1.40 FET. No trade needed.

**Sun Tire... Rain Tire... One Tire Does It All!**

- 10,000 BITING EDGES for year round traction
- GAS-**SAVING** double-belted radial-ply construction
- **ONE RADIAL** you don't have to change when the weather does
- **THE ORIGINAL** all-season radial tire — and only from Goodyear

**RAIN CHECK** If we sell out of your size we will issue you a rain check, assuring future delivery at the advertised price.



Size	Style	SALE PRICE	Plus FET. No trade needed.
P185/80R13	Whitewall	\$56.95	\$1.95
P195/75R14	Whitewall	\$64.17	\$2.23
P205/75R14	Whitewall	\$66.83	\$2.34
P225/75R14	Whitewall	\$71.30	\$2.62
P195/75R15	Whitewall	\$65.27	\$2.31
P215/75R15	Whitewall	\$70.33	\$2.62
P235/75R15	Whitewall	\$77.83	\$2.95

**Hurry... Sale Ends Saturday!**

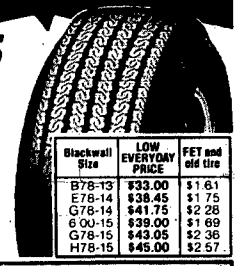
### OUR MOST POPULAR BLACKWALL

**\$29.95**

A78-13 Blackwall, plus \$1.50 FET and old tire. Other sizes low priced too.

#### Power Streak

- The performance dependability of bias ply construction
- Plenty of road contact for all-around traction
- No annoying tire thump, even when first starting out.



Blackwall Size	LOW EVERYDAY PRICE	FET and old tire
B78-13	\$33.00	\$1.61
E78-14	\$38.45	\$1.75
G78-14	\$41.75	\$2.28
G00-15	\$39.00	\$1.69
G78-15	\$43.05	\$2.36
H78-15	\$45.00	\$2.57

### SAVE 22% YOUR CHOICE BRAKE SERVICE \$66

REG. \$88  
Import or Domestic Cars

- 2-WHEEL FRONT DISC:** Install new front brake pads and resurface front rotors • Install new front grease seals and pack front wheel bearings • Inspect calipers and hydraulic system • Add fluid and road test car. (Does not include rear wheels).
- 4-WHEEL DRUM:** Install new brake lining and resurface all four drums • Install new front grease seals and repack front wheel bearings • Inspect hydraulic system, add fluid and road test car.

Offer Ends Oct. 3

### FREE WESTERN VEST WITH PURCHASE OF 4 WRANGLER LIGHT TRUCK AND RV RADIALS



For a limited time only, get this good-looking western vest absolutely free. The suede-like finish is buckskin tan, and the vest has a full shepherd lining with exposed trim on both pockets. The decorative branding patch is dark brown, with matching stitching. Get your free vest with purchase of four Wrangler Radials. Or, buy two Wrangler Radials and pay just \$10.95. Stop at any participating Goodyear Store or dealer for complete details. **DON'T WAIT! OFFER ENDS SEPT. 30th, 1981.**

Just Say 'Charge It!'



Use any of these other ways to buy: MasterCard • Visa • American Express Card • Carte Blanche • Diners Club • Cash

SEE YOUR INDEPENDENT DEALER FOR HIS PRICE AND CREDIT TERMS. PRICES AND CREDIT TERMS AS SHOWN AT GOODYEAR SERVICE STORES IN ALL COMMUNITIES SERVED BY THIS NEWSPAPER. SERVICES NOT AVAILABLE AT STARRED LOCATIONS.

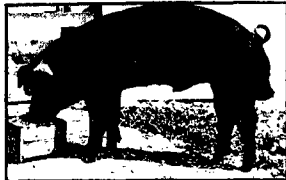
## GOODYEAR TIRE STORE

419 Main Wayne, NE  
375-2011



## PURE BRED SPF DUROCS

Nebraska and National Accredited SPF Herd No. 89 Performance and Backfat Tested Top Bloodlines Nebraska Certified Producers and Broccoliists Free Herd No. 126 Boars and Gilts Available at all Times



### GREENVIEW FARMS

Wayne, Nebr 402-375-1498 2 Miles North Hwy 15 1 Mile West  
DICK SORENSEN (Owner)  
Judy — Steve — Tom Nissen

## Fenced in by a lending limit?



Look to PCA. There's virtually no limit to the size of loan that we can make to a qualified borrower. At PCA your amount of credit is determined by the financial needs of your operation and your position and repayment capacity as a borrower. In good or bad times, you can count on PCA to have a readily available source of funds. And sometimes, things are greener on the other side of the fence.



Norfolk Production Credit Association  
1000 West County and First or Second Streets  
Phone 375-1852



See Us For

- Crushed Rock • Sand
- Concrete • Gravel

"Pick Up or We Deliver"

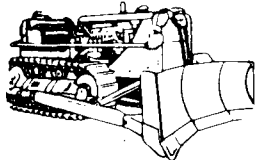
## MUSKER

CONCRETE & GRAVEL CO

Wayne (375-1990)

Wineer (529-6123)

## EARTH MOVING OF ALL TYPES:



- SOIL CONSERVATION
- WATERWAYS
- TERRACES
- DAMS

Call:

### Milo Meyer Construction Inc.

Wayne, Nebraska

Office: 375-3440 Home: 375-3730

## Soil Conservation Service



307 Pearl  
Ph. 375-2733  
Wayne, Nebraska

Public Service Message Courtesy of The Wayne Herald

## CONSIDERING BUILDING A GRAIN BIN?

CONSIDER THIS!!!

How Does **SIoux** Financing Compare?

<b>SIoux</b> 9 3/4% ANNUAL PERCENTAGE RATE	<b>ASCS</b> 14 1/2%	<b>FEDERAL LAND BANK</b> 12 1/4% ANNUAL PERCENTAGE RATE
--	------------------------	---

CAN YOU AFFORD NOT TO COMPARE

## Carhart LUMBER CO.

105 Main St.  
Wayne, Nebr.  
Phone 375-2110

Can you afford not to compare? Remember — this offer is for a limited time only, so stop in now and let us explain our program.



## LOWER ELKHORN NATURAL RESOURCES DISTRICT

Richard Alexander, Pilger; Thomas D. Anderson, Wakefield; Marlon Hamernik, Clarkson; Howard Hansen, Stanton; John Hansen, Newman Grove; Lowell Johnson, Wakefield; Marlon Kraemer, Laurel; Gerald Kratochvil, Clarkson; Dale Lingenfelter, Plainview; Melvin Melterhenry, Hoskins; Treasurer, William Meyer, Pierce; Wendell Nawscomb, Norfolk; Vice-Chairman; Dennis Newland, Norfolk; Secretary; Glen Olson, Wakefield; Chairman; Bert Peterson, Lyons; Ray Vogel, Battle Creek; Clinton Von Seggern, Scribner; Melvin Von Seggern, Craig; Harold Wagner, Scribner.

### PRIVATE LANDS OPEN TO HUNTING

Lists of private lands open to public access under the Wildlife Habitat Program, are now available. The list gives landowners names, legal description, directions to the areas, and size in acres.

The Wildlife Habitat Program is funded by habitat stamps sold with hunting licenses and 25% by NRD funds. Under the program, landowners are paid to create or protect habitat. Additional payment is available for allowing public access on the area for hiking, hunting, fishing or trapping.

Although access by the public is permitted on these areas, they are private property. The landowner thus, has the same right of any landowner to protect his property against damage or undue disturbance.

The habitat tracts open to public access include a range of plant types, from wooded river-bottoms to grass and legume mixtures interspersed with cropland.

Contact Lower Elkhorn NRD or Game and Parks Commission offices to obtain the public access list.

### BUILDING NEAR A STREAM?

Most construction in the flood plain of streams requires a permit from the State Department of Water Resources, unless the stream has been exempted by the County Board and the Department of Water Resources.

Types of construction that do not require these permits are:

1. Dams and permanent pumping facilities which are subject to other permit requirements. Exception: Structures which alter or retard the flow of water between the shore and an island or between two islands, requires a permit.
2. Fences with posts set only in earth. If posts are in concrete, such as chain link or cyclone fences, a permit is required. Other structures, which amount to at least 50% of its replacement value, may require a permit.

The following types of construction in all waterways, lakes or wetlands could fall under the jurisdiction of Section 404 of the Clean Water Act: Site development fills, road fills, dams and dikes, artificial islands, property protection devices like riprap, seawalls, breakwaters, fills for beach protection, levees and back fills.

If you are planning any construction in a flood plain, contact the Department of Water Resources Office in Norfolk or Lincoln, to see if a permit is required.

### NEBRASKA'S SOIL AND WATER RESOURCES FILM ON ETV

What is the condition and what may face Nebraska in the future when talking about soil and water resources? Those questions will be addressed in a 30 minute documentary to be aired on all stations of the Nebraska Educational Television Network, Saturday, September 19th at 6:30 p.m.

Ongoing conservation programs and future funding of those programs will also be discussed. Entitled, "Nebraska's Soil and Water Resources," the program was produced by the Nebraska Association of Resources Districts. It was funded with a grant from the Soil Conservation Service.

The program addresses resources concerns relating to Agriculture, the state's largest industry. There is considerable discussion about irrigation development in Nebraska's Sandhills, a topic gaining more attention each year.

### PLANT TWO TREES, YEAR ONE

Nebraskans have heard the call to plant trees. The many sources from which trees might be acquired make the total trees planted unknown but information provided by major sources indicates trends. 3.08 million trees were distributed in Nebraska under the Clarke-McNary Program in 1981 compared to 3.02 million in 1980. The Natural Resources Districts reported 1981 increases over 1980 of 6% for rural plantings and 102% in urban areas. The Department of Roads, Department of Institutions, State Penitentiary and the Nebraska Game and Parks Commission reported significant increases in plantings. Smaller cities reported increases in tree plantings but Nebraskas two largest cities reported fewer trees planted in 1981.

County and local tree planting committees established by County Extension Agents, organized projects that consolidated community tree orders for home owners, developed arboretums, living snow fences, wildlife plantings, down tree beautification and school, cemetery, park, street tree, rest home, forest and wind-break plantings.

Many counties or communities which did not organize tree planting committees in 1981 are encouraged to do so and select and develop tree planting projects which meets the interest or need of the local community. Now is the time to start planning for spring 1982 plantings. There could be time to plan some fall 1981 plantings.

### GROW YOUR OWN NUT TREES

The Nebraska Nut Growers Association in cooperation with the Nebraska Game and Parks Commission, Nebraska State and Extension Forestry, UN-L Horticulture Department and Nebraska Statewide Arboretum System is again sponsoring a "nut tree seed packet" program to encourage the planting of nut producing trees in Nebraska.

Seed packets will be sold for \$8.00 per packet which covers the cost of seed, packaging, shipping and sales tax. Each packet will contain approximately 25 seeds from at least five available species. Possible species for the 1981-82 seed packets include American Chestnut, Chinese Chestnut, Shellbark Hickory, Pecan, Butternut, Carpathian walnut, American Filbert (hazelnut), Pinyon Pine, Pawpaw and Heartnut (Japanese walnut).

Orders received before December 1, 1981, will be shipped for fall planting. Orders received after December 1, 1981, will be held in storage coolers and shipped in spring, 1982. For more information and order forms contact your local Extension, SCS, ASCS, NRD or District Forester's Office.

### CALENDAR OF EVENTS

- Oct. 2 — Fall Teachers' Institute, Norfolk
- Oct. 5 & 6 — Sixth Annual Old West Regional Range Judging Contest, Rapid City, S.D.
- Oct. 7 — Area Land Judging Contest, Stanton County
- Oct. 29 — LENRD Board Meeting

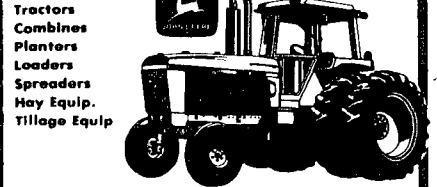
## OUR ALLIED Lumber & Supply

113 So. Main Ph. 375-2035 Wayne, NE

A complete line of building material and hardware for the Farm and Home.

- Lumber
- Shingles
- Siding
- Doors
- Tools
- Electrical
- Windows
- Plywood
- Metal Roofing & Siding
- Cement & Masonry Products
- Building Hardware
- Supermix Paints
- Garage Doors
- Plumbing
- Paneling
- Insulation

"Independently owned and striving to serve you better."



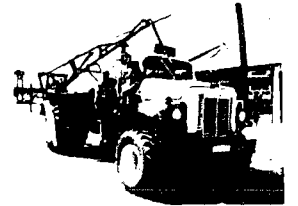
John Deere, Farmhand, Oehl, Dual, Stanhoist, Servis, Bush-Mog.

### NORTHEAST NEBRASKA'S SUPERSTORE FOR ALL YOUR FARM EQUIPMENT NEEDS



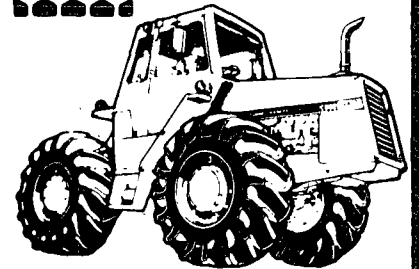
East Hwy 35 375-3325 Wayne

Olsen and Lockwood Center Pilot Sales And Service



- ★ Liquid & Dry Fertilizer
- ★ Anhydrous Ammonia
- ★ Custom Spraying

SHERRY BROS. FARM & HOME CENTER  
Phone 375-2082  
Parking West of Building



NEW HOLLAND SALES — PARTS SERVICE OMC

### RED CARR IMPLEMENT

Hwy. 15 North Wayne, Nebr. Phone 375-2685



"LIVE AND FARM BETTER ELECTRICALLY"

## Wayne County Public Power District

Serving Wayne and Pierce Counties

legal notices

VILLAGE OF WINDSIE BOARD PROCEEDINGS

A meeting of the Board of Trustees of the Village of Windsie, Nebraska, was held at the Clerk's office in said Village on the 8th day of September, 1981 at 7:30 p.m. Present were...

Nancy Warnemunde and Gloria Lessman were present to represent the Federated Women's Guild... The Board of some more auditorium rejuvenation had been planned...

Russell Prince and Bill Anderson were present at the meeting to present to the Board the Fire Department... Owen Hartman was present to ask about the water improvements...

Russ Longnecker was present to apologize for the damage to the Board... Motion was made by Jacobson and seconded by Brockmoller...

The August treasurer's report was accepted... Motion was made by Brockmoller and seconded by Schmidt...

The Board of Trustees of the Village of Windsie, Nebraska, will meet in regular session at 7:30 p.m. on October 5, 1981...

NOTICE TO DEFENDANTS TO: Wayne Alumni Chapter of Beta Sigma Psi, Incorporated, a dissolved corporation...

You and each of you, are hereby notified that on the 29th day of September, 1981, Beta Sigma Psi National Fraternity, plaintiff...

BETA SIGMA PSI NATIONAL FRATERNITY, Plaintiff vs. LYNN WYLLIE, Defendant...

NOTICE TO CREDITORS

UPON FORMAL APPOINTMENT OF PERSONAL REPRESENTATIVE County No. 4585...

SECTION 0010 ADVERTISEMENT FOR BIDS Seal proposals for furnishing all plant equipment, transportation, tools materials...

SALES SUPERVISOR: Person needed to work as manager/customer service in farm equipment line...

WANTED: Eggs and cocktail waitresses. Apply at the Wagon Wheel Steakhouse in Laurel. 517H

FOR SALE: Rope horse. Registered paint, 5 year old gelding Sire Yellow Mount...

FOR RENT: 2 bedroom deluxe Westview Terrace Call 375 4655

FOR RENT: Large 4 bedroom house 514 Main St 375 2231 or 375 1531

FOR RENT: 2 bedroom duplex Westview Terrace Call 375 4655

FOR RENT: 2 bedroom duplex Westview Terrace Call 375 4655

help wanted

RADIO-TV ENGINEER

Search Re-Opened. Humanities Division. \$1,145 per month, to begin on/about October 23, 1981...

THE WAYNE Stamp Club will meet at Columbus Federal Savings and Loan Association community room at 220 West 7th, Wayne, NE at 8:15 p.m. the 24th of September...

THAT EXTRA TOUCH Cakes baked and decorated to your specifications. Cakes for birthdays, anniversaries, special occasions...

CLASSES DAILY in stained glass, painting, drawing, commercial art and various crafts. "Marie's Art Studio" 110 Main, Wayne, NE 68787 Phone 402 375 1807

BATHTUBS: Porcelain and fiberglass repaired, refinished and recolored. Bill Roth: Nebraska Tub and Tile Refactory, 829 West Park St., West Point, NE 68788. 402-372-2202. 521H

HOUSE FOR SALE: Near hospital, contemporary split-foyer. 375-4662

REAL ESTATE THINKING OF SELLING YOUR HOME See or Call US PROPERTY EXCHANGE 112 Professional Building

SALES CAREER - Will train aggressive person for exceptional average earnings. Excellent fringe benefits. Three-year professional training program...

3 BEDROOM Banna Villa set up in court. Modest down payment. Monthly payments cheaper than rent. Call Norfolk, 379-0666. 514H

FOR SALE: 1977 Chevy Nova. 54,000 miles, 6 cylinder, 4 door. Phone 287-2887. 527H

special notice

Thompson Implement

Your Behlen Dealer at Bloomfield, NE is now giving huge discounts on grain tanks, farm buildings, Shivers and Sukup stirring devices. Complete erection available.

EVERYTHING for the beginning to advanced glass crafts person Best "How to" books and patterns, quality tools and supplies Classes daily. Talk to Marie Hagemann, artist, custom designer and interior decorator "Marie's Art Studio" 110 Main, Wayne, NE 68787 Phone 402 375 1807

WATER TOWN MONUMENT CO. Finest in quality Expert craftsmanship Monuments and Markers Virgil Luhr Phone 375-2498

REAL ESTATE HOUSE FOR SALE: Near hospital, contemporary split-foyer. 375-4662

SALES CAREER - Will train aggressive person for exceptional average earnings. Excellent fringe benefits. Three-year professional training program...

3 BEDROOM Banna Villa set up in court. Modest down payment. Monthly payments cheaper than rent. Call Norfolk, 379-0666. 514H

FOR SALE: 1977 Chevy Nova. 54,000 miles, 6 cylinder, 4 door. Phone 287-2887. 527H

FOR RENT: 2 bedroom duplex Westview Terrace Call 375 4655

FOR RENT: Large 4 bedroom house 514 Main St 375 2231 or 375 1531

card of thanks

THE FAMILY of Gilmore Sals

wish to express our deepest gratitude to relatives, friends and neighbors for all the kindness they bestowed on our family during our bereavement. Thanks for food brought to the house and dinner served following the memorial services by the Ladies Aid and EOT Club...

HEY - Thanks all of you for cards, flowers, visits, phone calls, all the gifts, everything was beautiful. Thanks to Lorree and Kerl, my sisters, their families, other relatives and my neighbors. Rev. Hafemann for his prayers and visits, the delicias, the kitchen staff for their support, and their help. Dr. Wiseman and Dr. Lindau for their encouraging visits. Sister Gertrude for being there for me and the Hospital staff - what a group, they were great. Hey, thanks everyone for your support and help. You're the best. Love ya all! Mildred Dangberg (Auntie Mill) 521

WE'D LIKE to thank all our friends, neighbors and relatives for the flowers, cards, memorials and food brought to our home at the time of the death of our son, Brady. It was all gratefully appreciated. God bless you ALL. Bob and Peg Hoffman. 521

ATTENTION PARENTS: We have several students looking for babysitting jobs. If you need help, please call Campus Ministry. 375-1234. 521C

ATTENTION PARENTS: We have several students looking for housecleaning jobs. If you need help, please call Campus Ministry. 375-1234. 521C

DON'T EVER buy a new or used car or truck until you check with Arnie's Ford-Mercury, Wayne. 375-1212. We can save YOU money! 514U

WANTED TO BUY: Used baby cribs. 287-2211. Ask for Terry Baker. 517H

WANTED TO BUY: Used baby cribs. 287-2211. Ask for Terry Baker. 517H

WANTED TO BUY: Used baby cribs. 287-2211. Ask for Terry Baker. 517H

card of thanks

THE FAMILY of Gilmore Sals

wish to express our deepest gratitude to relatives, friends and neighbors for all the kindness they bestowed on our family during our bereavement. Thanks for food brought to the house and dinner served following the memorial services by the Ladies Aid and EOT Club...

HEY - Thanks all of you for cards, flowers, visits, phone calls, all the gifts, everything was beautiful. Thanks to Lorree and Kerl, my sisters, their families, other relatives and my neighbors. Rev. Hafemann for his prayers and visits, the delicias, the kitchen staff for their support, and their help. Dr. Wiseman and Dr. Lindau for their encouraging visits. Sister Gertrude for being there for me and the Hospital staff - what a group, they were great. Hey, thanks everyone for your support and help. You're the best. Love ya all! Mildred Dangberg (Auntie Mill) 521

WE'D LIKE to thank all our friends, neighbors and relatives for the flowers, cards, memorials and food brought to our home at the time of the death of our son, Brady. It was all gratefully appreciated. God bless you ALL. Bob and Peg Hoffman. 521

ATTENTION PARENTS: We have several students looking for babysitting jobs. If you need help, please call Campus Ministry. 375-1234. 521C

ATTENTION PARENTS: We have several students looking for housecleaning jobs. If you need help, please call Campus Ministry. 375-1234. 521C

DON'T EVER buy a new or used car or truck until you check with Arnie's Ford-Mercury, Wayne. 375-1212. We can save YOU money! 514U

WANTED TO BUY: Used baby cribs. 287-2211. Ask for Terry Baker. 517H

WANTED TO BUY: Used baby cribs. 287-2211. Ask for Terry Baker. 517H

WANTED TO BUY: Used baby cribs. 287-2211. Ask for Terry Baker. 517H

AUTUMN SALE BARGAINS GALORE! MOORGARD LATEX HOUSE PAINT Long-lasting colors in a soft gloss finish. Reg. Retail Price \$18.95 save \$5.00 GAL. CUSTOM COLORS HIGHER IN PRICE. RED HOT SPECIAL!!

Money Market Certificate Effective September 15, 1981 thru September 26, 1981 14.907% \$10,000 Minimum - 6 Month Maturity. 30 Month Certificate Effective September 13, 1981 thru September 26, 1981 16.30% Federal Regulations require a substantial penalty for early withdrawal. The State National Bank and Trust Company Wayne, NB 68787 • 402/375-1130 • Member FDIC

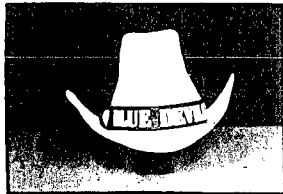
FROM THE BANK NORTHEAST NEBRASKA CALLS FIRST . . .

# THE GOOD GUYS WEAR WHITE HATS!



Wayne High Cheerleaders. Left to right: front: Jill Tompkins, Robin Schuett, Branda Wessel, Becky Miller. Back: Karla Otto, Holly Franzen, Tammy Carlson, Jeanne Tietgen.

With a qualifying deposit and while our supply lasts, you can choose from Wayne High Blue Devil, Wayne State Wildcat or Nebraska Cornhusker Cowboy Hats. These hats are white in color and are a great way to show your support for your favorite team.



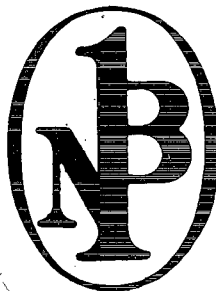
Here's How You Can Qualify!

	Minimum Deposit	Your Cost		Minimum Deposit	Your Cost
<b>REGULAR ACCOUNTS</b>			<b>SPECIAL YOUTH ACCOUNTS</b> (Under 19 Years of Age)		
New Checking Accounts (no service charge)	\$500.00	\$8.95	New Checking Account (no service charge)	\$50.00	\$8.95
New NOW Accounts	\$500.00	\$8.95	New Certificate of Deposit	\$100.00	\$8.95
New Money Market Certificate	\$10,000.00	\$4.95			
Tax Free Certificate (Available Oct. 1, 1981)	\$500.00	\$4.95			

Limit 1 Per Customer

Get Yours Today!

We're big enough to know how,



and small enough to know you.

# THE FIRST NATIONAL BANK OF WAYNE

Main Bank - 301 Main St. 375-2525 Member F.D.I.C. Drive-In Bank - 7th & Main St. 375-3002